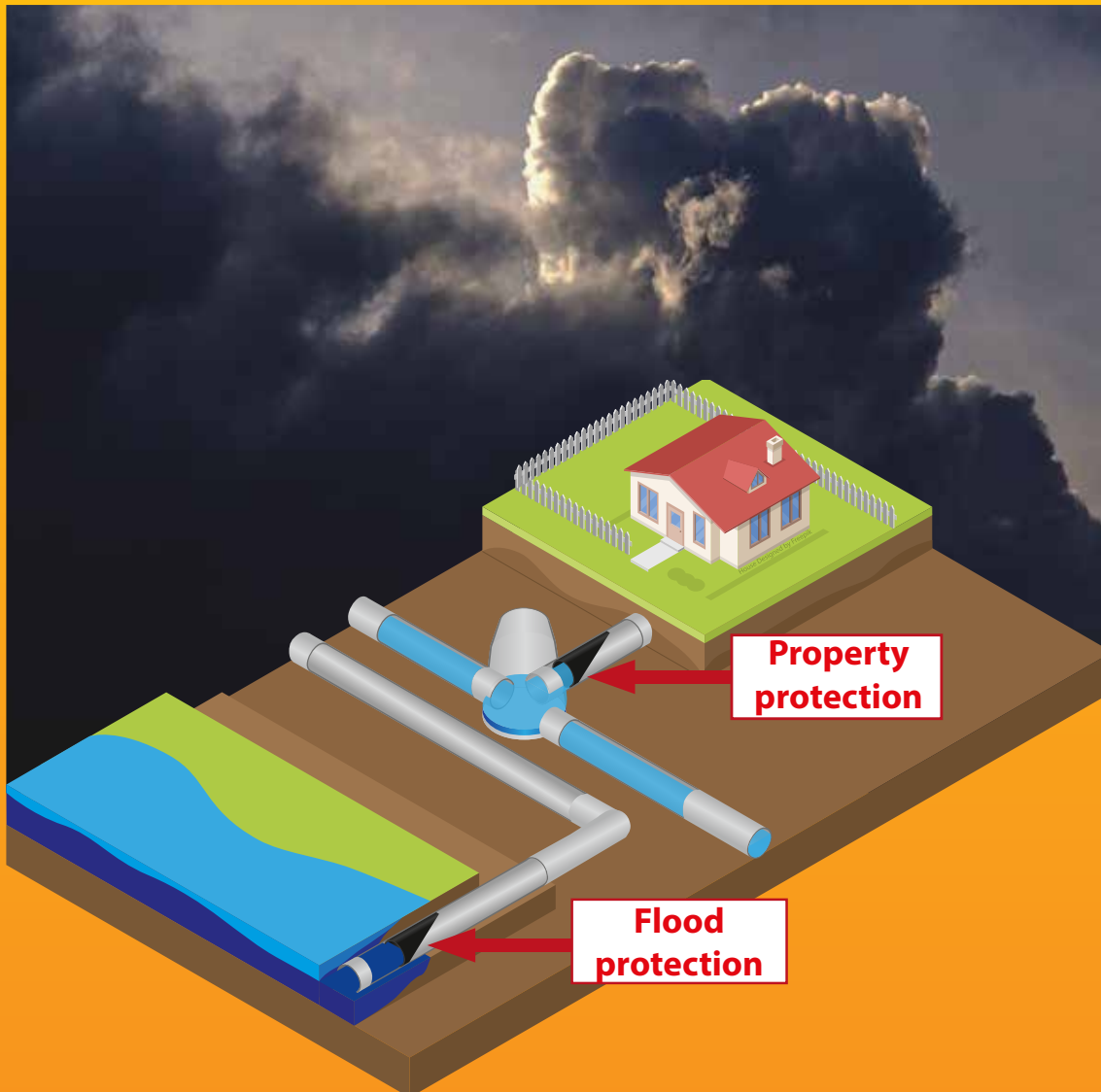




WORLD WIDE WATER



MwStop[®] CHECK VALVE

THE INTELLIGENT BACK FLOW
PREVENTION DEVICE UP TO DN1800





MwStop® CHECK VALVE

MwStop® check valve can be easily installed within a few minutes in practically all types of pipes. Immediate protection against flood, foreign substances and annoying smells.

The wide range of MwStop® check valves ensures the availability of a suitable model for any kind of application as back-flow protection in sewerage pipes, rain water pipes or the emerging of odors out of miscellaneous waste water systems.

SCOPE OF APPLICATION

- main sewer
- sewers
- rainwater pipes
- clarifier basin

SIZES UP TO DN1800

MwStop® grant efficient protection against water back-flow, flooding and annoying odors.

MwStop® APPLICATIONS

There are numerous causes for back-flow.

Heavy rainfall, pipe blockage, operational breakdown of the pumping station, water back-flow from water bodies or other overload of the sewage system might exceed the capacity of the sewage system.

MwStop® check valve protects against water back-flow, intrusion of water and foreign substances into buildings as well as into sewage and rainwater pipes. Moreover, MwStop® check valve is an efficient protection against inconvenient smells.

BUILDING PROTECTION

Building protection against flooding

- water back-flow protection
- water back-flow protection against underground water

Responsible for the protection against water back-flow is always the owner of the building.



FLOOD PROTECTION

Public sewer

- water back-flow protection
- adjusting of waste water
- triggering of flush cleaning

ODOR SHUTTER

MwStop® check valve is the perfect solution against molestation of intensive smelling substances from the sewer, due to long periods of drought. During such times siphons in buildings and facilities that are not used in continuation will dry out and unpleasant odors arise.

HOTEL INDUSTRY, COTTAGES

- when the siphon dries out after drought periods
- for irregularly used real estate objects

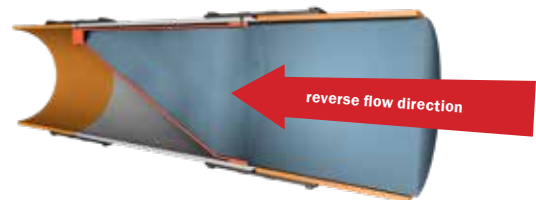
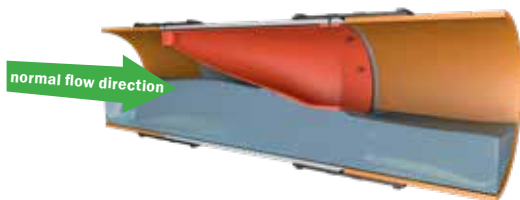


MwStop® FUNCTIONALITY

POSITION 1 – SHUT DOWN PHASE - the elastic membrane of the MwStop® check valve seals the pipe off tightly until the backlog of the outgoing flow reaches the trigger pressure.

POSITION 2 – FLUSHING PHASE - lifts the elastic membrane up and the flush of the backlog water cleans the pipe and removes possible deposits.

POSITION 3 – BACKLOG PHASE - water who pushes the membrane outwards against the wall of the pipe sealing it off effectively against the intrusion of the incoming water. The back-log height varies according to the MwStop® check valve model (maximum 8.000 mm).



MwStop® - FEATURES

- backflow prevention
- odor control
- flushing

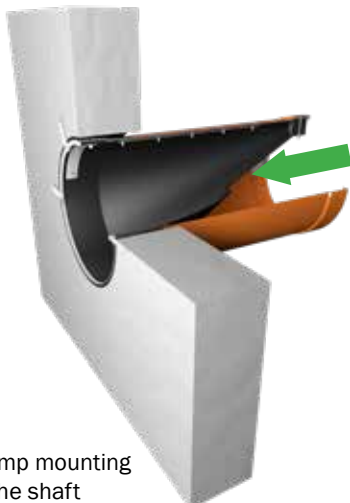
MwStop® - ADVANTAGES

- extremely low pressure drop
- without moving parts
- applicable for all pipe materials and sizes
- simplest installation
- long lifetime
- maintenance-free

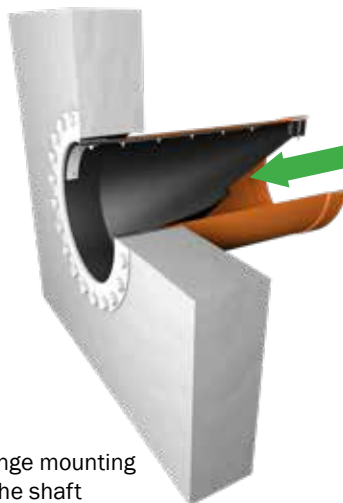
MwStop® INSTALLATION

MwStop® valves can be installed in various ways in any position from horizontal to vertical , full functionality is given.

 = normal flow direction



Clamp mounting
in the shaft



Flange mounting
in the shaft



Mounting as part
of the pipe

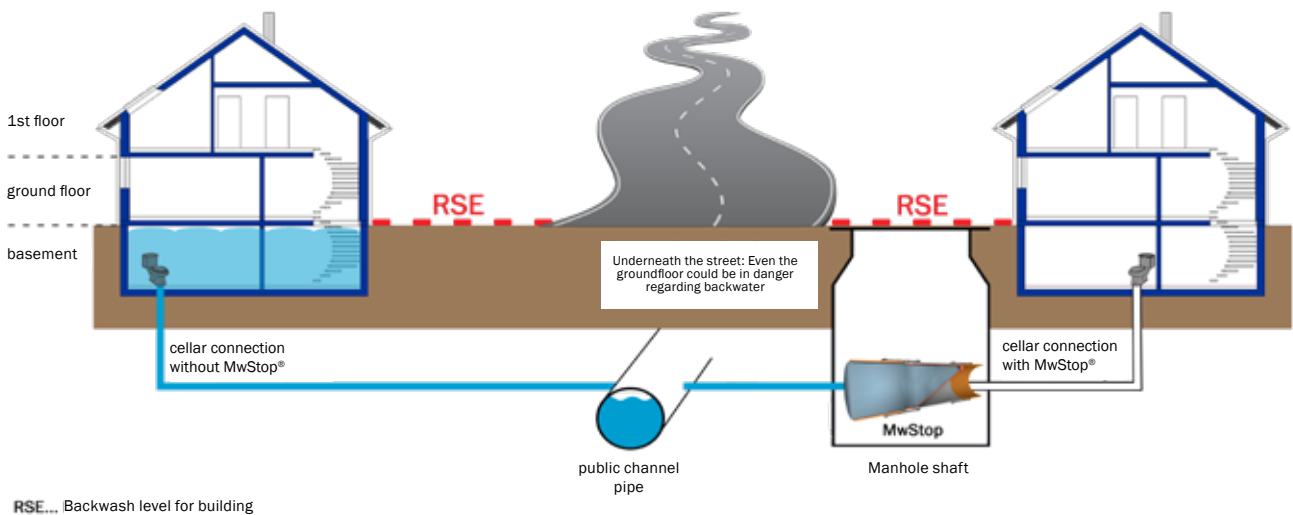
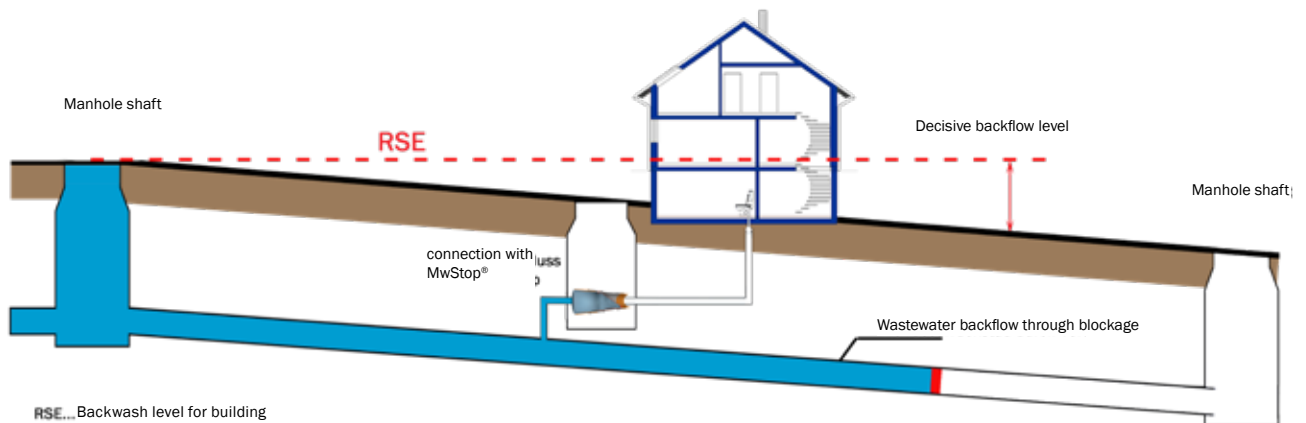


Mounting at
the pipe end

MwStop® BACKWATER HEIGHTS

MAXIMUM BACK-FLOW PROTECTION

The MwStop® standard models provide backflow protection up to a height of 5.000 mm water column. The MwStop® soft models provide a backflow protection up to a height of 3.000 mm water column. Special models up to a height of 8.000mm water column can be produced on demand.



MwStop® VERSIONS

MwStop® SIZES

FOR ALL COMMON PIPE INSIDE DIAMETER

MwStop® check valves are available up to 1800. Therefore practically for all pipe dimensions and pipe materials. Special sizes are available on request.

MwStop® MATERIALS

CASING

The standard casing of the MwStop® consists of stainless steel 1.4404.

For sizes up to DN200 and mounting as part of a pipe, PVC/PE can be used as an alternative offered.

MEMBRANE

The MwStop® membrane is manufactured up to DN300 in NBR. Larger diameters are made from EPDM.

MwStop® STANDARD

FOR GRADIENTS $\geq 2\%$

To ensure the full functionality of the MwStop® a minimum gradient of 2% is required in the standard version. Under this precondition the EPDM membrane of the MwStop® opens up at a certain water pressure (water flow) and closes if this pressure falls below the normal level. The MwStop® remains closed until the pressure of the backlog water reaches the trigger point. At the trigger point it opens up all of a sudden creating the controlled flushing process.

MwStop® SOFT

FOR LOW GRADIENT

For installation in pipes with a gradient of less than 2% (minimum 1% is required) the membrane of the MwStop® consists of a more flexible material. This ensures that even in these situations the flushing process removes the waste water inclusive eventual deposits.



MwStop® MODELS AND SIZES

MwStop® STANDARD MIN. 2% GRADIENT

audited back pressure:	standard ... max. 5m water column soft ... max. 3m water column
material:	Stainless EN 1.4404/AISI 316 (optional PVC/PE)
membrane:	NBR (DN100 - DN300) EPDM (DN300 - DN1800)
mounting:	Up to DN900 the scope of delivery contains gaskets and clamps

Article Nr.	DN	MwStop® Lenght [mm]	existing pipe inside diameter [mm]		
			from	-	to
Mw097-55-3std	100	220	98	-	101
Mw101-55-3std	110	230	102	-	105
Mw116-55-3std	125	255	118	-	119
Mw146-55-3std	150	310	148	-	159
Mw181-55-3std	200	400	183	-	200
Mw191-55-3std	200	STZ*	193	-	211
Mw215-55-3std	225	470	217	-	234
Mw230-55-3std	250	520	232	-	248
Mw240-55-3std	250	STZ*	242	-	258
Mw283-55-3std	300	650	285	-	300
Mw290-55-3std	300	650	292	-	308
Mw340-55-3std	350	745	342	-	350
Mw370-55-3std	400	760	372	-	380
Mw390-55-3std	400	800	392	-	404
Mw440-65-3std	450	900	442	-	461
Mw490-65-3std	500	970	492	-	504
Mw590-65-3std	600	1200	592	-	602
Mw690-65-3std	700	1350	692	-	708
Mw750-65-3std	750	1500	752	-	768
Mw790-65-3std	800	1580	792	-	808
Mw885-65-3std	900	1780	887	-	913
DN1000 - DN1800	complete with standard flange DIN2632		on demand		

STZ* ...stone ware

Customized versions can be delivered on request.

For further technological information please contact your MwStop® dealer or visit our homepage www.mta-messtechnik.at



DISTRIBUTION:
MTA Messtechnik GmbH
Handelsstraße 14-16
A-9300 St. Veit an der Glan
T +43 4212 71491
F +43 4212 72298
office@mta-messtechnik.at
www.mta-messtechnik.at

PRODUCTION:
MTA - Water Products GmbH
Handelsstraße 14-16
A-9300 St. Veit an der Glan
T +43 4212 71491
F +43 4212 72298
office@mw-stop.com
www.mw-stop.com