

Advanced SF₆ gas management:
Discover our latest products!

With the clear commitment to highest quality and performance, we are happy to present our latest products.

Our product managers have closely identified our customers' demands, offering with these new developments optimum solutions to enhance performance and efficiency in SF₆ gas management.



SF₆ service carts
TÜV SÜD confirmed safety and performance data

Real time testing of five DILO SF₆ service carts*.

Your benefits:

- Objectively tested performance times
- Consistent parameters for recovery, filling and evacuation
- Valid basis for investment decisions
- Highest quality and performance „Made in Germany“

Confirmed data by TÜV SÜD:

- Concrete SF₆ recovery time
- Lead time for the evacuation of air
- Time requirements for SF₆ filling
- Minimum gas tightness of 1x10⁻⁴ mbar l/sec
- SF₆ gas quality outperforming IEC 60480 guideline

* Tested service carts: B143R11 – Mini Series, L030R01 – Piccolo Series, B057R03 – Compact Series, L057R01 – Economy Series, L170R01 – Mega Series

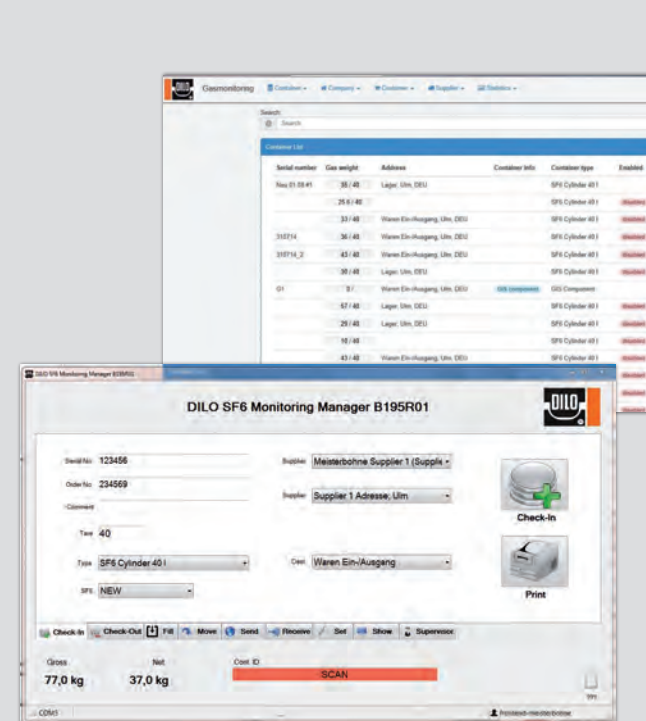


SF₆ gas monitoring
Electronic weighing scales with database interface

This unit facilitates SF₆ gas bottle management in connection with the „SF₆ Monitoring Manager“, a specially developed software.

Incoming gas vessels can be marked with labels by means of the optional label printer, and SF₆ vessels in use can be easily identified by the 2D capable barcode scanner with Bluetooth interface.

- Weighing accuracy ±0.1 kg
- 10" tablet PC with database connection
- Network independent by Li-Ion battery operation



SF₆ gas monitoring
“SF₆ Monitoring Manager” database software

This proprietary software has been specially developed to cover SF₆ gas monitoring needs in GIS production. It allows central administration of all gas withdrawal and supply quantities at various workplaces. Thus, the history of containers, stored quantities at a specific time at various locations can be easily traced back.

- Special database software as cloud or network solution
- Full traceability of SF₆ quantities employed
- Facilitates preparation of SF₆ mass balance



User-friendly
L030R01 service cart with iPad control

The L030 model of the Piccolo series has been specially designed for modern switchgear with small gas compartments. Due to its compact construction this device fits conveniently onto a euro pallet for transport and is easily manoeuvrable even in the very narrow passage ways of gas insulated switchgear.

- iPad with W-LAN function enables remote control
- Main functions can be initiated and controlled via iPad
- Convenient and user-friendly operation



Helpful tool
“DensiControl” devices for testing density monitors

As safety equipment in switchgear density monitors have to function properly. The DensiControl devices allow quick verification of triggering of density controller switching points by the given parameters such as pressure or temperature.

- Automatic testing and data recording of switching points
- Adaptable to various types of density monitors
- Versions for testing in dismantled or installed condition

The L030 service cart with iPad control, the DN20 hose reel with quick coupling and the DensiControl device for GDM testing are certainly the most prominent product highlights. However, our new online-based service cart selector will certainly arouse our customers' enthusiasm as well.

Overview of our product novelties:

- SF₆ service carts* with TÜV SÜD certified performance data
- SF₆ gas monitoring units for GIS production
- “SF₆ Monitoring Manager” software
- L030R01 service cart with iPad control
- “DensiControl” devices for testing density monitors
- SF₆ Multi-Analyser with H₂S and CO sensors
- Hose reel and quick coupling
- Web-based service cart selection
- SF₆ E-Learning course

Our sales team and our global agents will be happy to familiarize you in more detail with our product highlights.



SF₆ Multi-Analyser

Now, also available with H₂S and CO sensors

The multi-functional measuring device is now optionally available with two additional electro-chemical sensors. Thus, it is also possible to precisely determine the concentration of hydrogen sulphide (H₂S) and carbon monoxide (CO) in such a way that the requirements of the Chinese test standards can also be fully complied with.

Measuring range of the sensors:
H₂S: 0 - 100 ppm_v
CO: 0 - 500 ppm_v

- Now available with H₂S and CO sensor
- Determines up to six parameters in one measurement
- Precise measuring process without SF₆ emissions

Useful in GIS fabrication

Hose reel and quick coupling

The hose reel has been specially tailored to customer requirements in GIS production areas to keep hoses tidy. This practical tool allows quick hose installation in GIS production and to have everything neat and clean. The quick coupling is very useful in all fields of application where hoses have to be frequently loosened and reconnected. Thanks to the clamp lock, the DN20 hoses can easily be connected without any loss of SF₆ gas. Therefore, the quick coupling is very useful in all fields of application where hoses have to be frequently loosened and reconnected.

- For DN20 connections
- No SF₆ gas losses
- Increase of efficiency in GIS production



Always the right choice

Web-based service cart selection

With this new online tool you may select the service cart fully complying with your specific needs. When entering the maximum SF₆ gas quantity and, as an option, the final vacuum wanted, all eligible service carts will show up instantly. Further finetuning of the selection parameters is also possible. All characteristics of eligible maintenance carts will pop up so that the units can be perfectly compared.

- Comfortable online tool
- Enables customized service cart selection
- Imparts security in decision making

Use the new **DILO** service cart selection tool on our website:



Brushing up SF₆ knowledge

SF₆ E-Learning Course

In cooperation with our partner Nine Lanterns, we have developed a training concept allowing deepening participant's SF₆ knowledge at any time and from anywhere. The learning modules focus on subjects such as understanding SF₆ gas, Working with SF₆ gas and Monitoring SF₆ gas. The menu is interactive and very user-friendly.

If you want to obtain a 12-month enterprise licence, just get in touch with: e-learning@dilo-gmbh.com

New Products:
For safe and sustainable SF₆ gas handling!

Further information on our comprehensive programme for emission-free SF₆ gas handling is available at www.dilo-gmbh.com or simply request our complete catalogue on CD.

Subject to change without notice.
© Copyright DILO - Edition 10/2015



Subscribe to our **UpDate newsletter** on our website!

DILO
Armaturen und Anlagen GmbH

Frundsbergstrasse 36
D-87727 Babenhausen

Tel.: +49 (0) 83 33 - 302-0
Fax: +49 (0) 83 33 - 302-52
E-Mail: info@dilo-gmbh.com



DILO. Sustainably tight.